



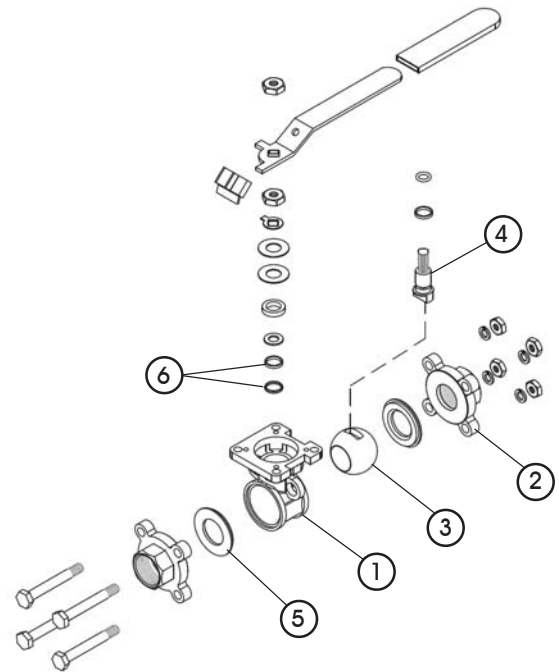
## Three-Piece Ball Valve, Full Port, Sizes 1/4" ~ 2"



The SVF Series EZ9 valves are designed for superior performance in general purpose, plant-wide applications. The direct-mount feature reduces the size and weight of traditional automated valves. EZ9 features live-loaded stem seals to provide superior performance in high cycle applications.

### SERIES EZ9 DESIGN FEATURES

- ✓ Designed & built for economical performance
- ✓ Pressure rated for 1,000 WOG
- ✓ Socket weld complies with ANSI B16.11
- ✓ Full Port flow path for maximum flow
- ✓ Built-In ISO 5211 direct mounting pad for easy automation
- ✓ End connections include SE (Screwed Ends, FNPT), SW (Socket Weld) and BW (Butt Weld)
- ✓ Weld ended carbon steel valves supplied with stainless steel bodies
- ✓ Three-piece "swing out" design offers easy access for in-line maintenance
- ✓ Blowout proof stem adds safety & reliability
- ✓ Lockable in the "Open" or "Closed" position



### MATERIALS OF CONSTRUCTION

| ITEM | DESCRIPTION                   | MATERIALS SPECIFICATIONS<br>(Additional options available)           |
|------|-------------------------------|--|
| 1    | Body                          | 316 Stainless Steel (ASTM A351 CF8M)                                 |
| 2    | End Connector                 | 316 Stainless Steel (ASTM A351 CF3M)<br>Carbon Steel (ASTM A216 WCB) |
| 3    | Ball                          | 316 Stainless Steel  |
| 4    | Stem                          | 316 Stainless Steel  |
| 5    | Seat/Body Seal<br>(One Piece) | TFM1600™   |
| 6    | Stem Seal                     | RTFE   |

### SERIES "EZ" FOR AUTOMATION

EZ9 valves feature direct mounting for pneumatic or electric automation. This feature reduces the cost and additional size and weight of valves requiring a mounting adapter kit. See "aeroValve" and "ElectroValve"



What do you need today?™

HIGH PURITY  
**CleanFLOW**  
www.CleanFLOW.net

PRO-SPEC  
PROCESS SPECIFIC  
WWW.PRO-SPEC.NET

QUALITY FLOWS  
THROUGH US

## Three-Piece Ball Valve, Full Port, Sizes 1/4" ~ 2"

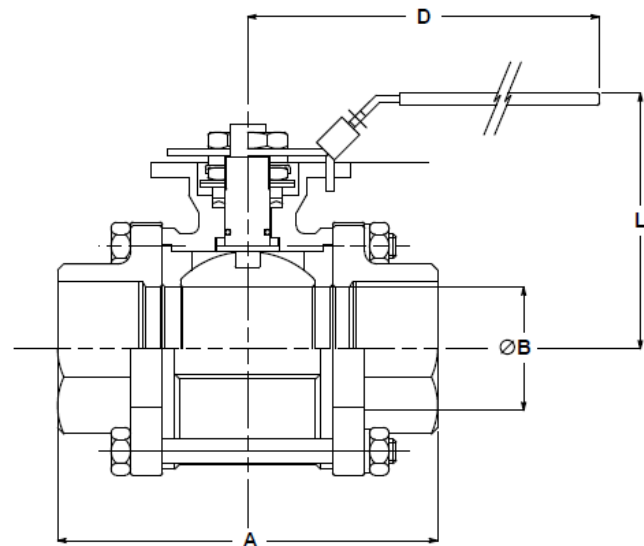
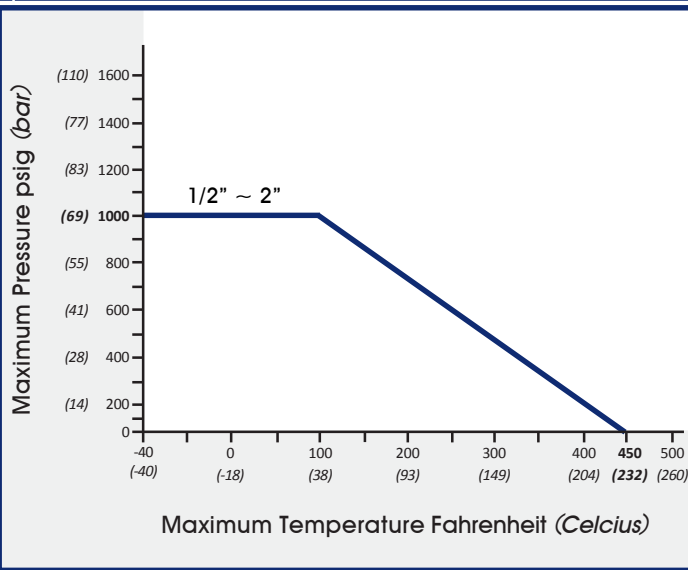


### DIMENSIONS, WEIGHT, C<sub>v</sub>, TORQUE

| Size   | A    |     | B    |    | D    |     | L   |     | Weight. |     | C <sub>v</sub> | Torque*            |    |
|--------|------|-----|------|----|------|-----|-----|-----|---------|-----|----------------|--------------------|----|
|        | in.  | mm  | in.  | mm | in.  | mm  | in. | mm  | lbs     | kg  |                | in-lb <sub>f</sub> | Nm |
| 1/4"   | 2.50 | 64  | 0.59 | 15 | 4.41 | 112 | 2.9 | 74  | 1.5     | 0.7 | 12             | 35                 | 4  |
| 1/2"   | 2.50 | 64  | 0.59 | 15 | 4.41 | 112 | 2.9 | 74  | 1.5     | 0.7 | 12             | 35                 | 4  |
| 3/4"   | 2.85 | 72  | 0.79 | 20 | 4.41 | 112 | 3.2 | 81  | 1.8     | 0.8 | 32             | 50                 | 6  |
| 1"     | 3.19 | 81  | 1.00 | 25 | 5.35 | 136 | 3.6 | 91  | 2.4     | 1.0 | 57             | 80                 | 9  |
| 1-1/4" | 3.72 | 94  | 1.25 | 32 | 7.28 | 185 | 3.9 | 99  | 3.6     | 1.6 | 80             | 120                | 14 |
| 1-1/2" | 4.25 | 108 | 1.50 | 38 | 7.79 | 198 | 4.6 | 117 | 5.6     | 2.5 | 104            | 250                | 28 |
| 2"     | 4.78 | 121 | 2.00 | 51 | 7.79 | 198 | 4.9 | 124 | 8.2     | 3.7 | 240            | 300                | 34 |

\* At full differential pressure for clean fluids with TFM1600™ Seats

### EZ9 - PRESSURE/TEMPERATURE CHART



### HOW TO ORDER SERIES EZ9 BALL VALVES

| SERIES  | END MATERIAL  | BODY MATERIAL  | SEAT & BODY SEAL                    | ENDS  | SIZE  |
|---|---|--|-------------------------------------|---|---|
| EZ9   | <b>4</b> = Carbon Steel<br>ASTM A216 WCB<br>(BW & SW Ends Only)<br><br><b>6</b> = 316L Stainless Steel<br>ASTM A351 CF3M<br>(SE, BW, SW Ends) | <b>6</b> = 316 Stainless Steel<br>ASTM A351 CF8M<br>With Stainless Steel Ball & Stem | <b>AT</b> = TFM1600™<br>(One Piece) | <b>SE</b> =<br>Screwed Ends (FNPT)<br>On Stainless Steel Valves<br><br><b>BW</b> =<br>Butt Weld Ends<br><br><b>SW</b> =<br>Socket Weld Ends | <b>02</b> = 1/4" <b>12</b> = 1-1/4"<br><b>05</b> = 1/2" <b>15</b> = 1-1/2"<br><b>07</b> = 3/4" <b>20</b> = 2"<br><b>10</b> = 1" |
| <b>Order Example: (EZ966ATSE05)</b>   |   |  |                                     |   |   |
| <b>Example Description: Stainless Steel Ends &amp; Body, Stainless Steel Ball &amp; Stem, TFM1600™ One Piece Seat &amp; Body Seal, Screwed Ends (FNPT), 1/2" Size</b> |   |  |                                     |   |   |
| EZ9   | 6   | 6  | AT                                  | SE  | 05  |